



MORE TRAINS ARRIVE ON TIME THAN EVER BEFORE

19 July 2009

Premier Nathan Rees today said that record on-time-running results had been achieved on the CityRail network for the past financial year.

The release of the official figures show during 2008/09, on time running averaged 95.4 per cent – against a benchmark of 92 per cent.

“These are the best results in 10 years with every CityRail line improving on-time-running,” Mr Rees said.

“We know how important it is to make sure we provide a good service – so people can get to work and home to their families on time.

“In the last two years alone we have seen real improvement, with on-time-running up from 92.7 per cent in 2007/08 and 92.2 per cent in 2006/07.”

Mr Rees said it was the results were first-class, considering the increase in use of the CityRail network over the last two years.

“Last year there were more than 300 million passenger trips across the network - an increase of 20 million since 2007,” Mr Rees said.

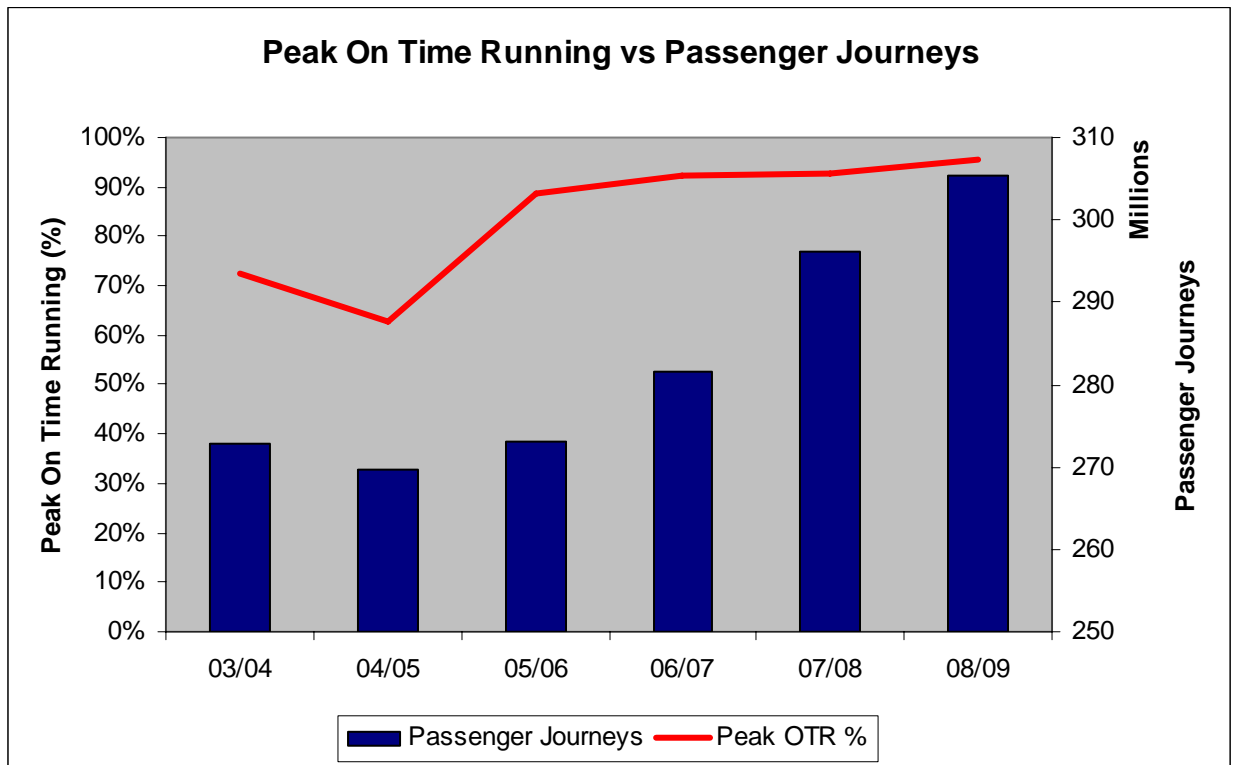
Transport Minister David Campbell said the Government was expanding capacity to meet increased demand on the network.

“The \$2.3 billion Epping to Chatswood Rail Link is transporting over 10,000 people every day and we expect that number to increase when it is incorporated into the network in October,” Mr Campbell said.

“The Government has also invested \$3.6 billion in 626 new air-conditioned carriages which is the largest rollingstock order in Australia’s history, and they will start hitting the network from late next year.

“The 2009 Timetable, which begins from 11 October, will see additional peak hour services, with six-car trains increased to eight-car trains on more services across Sydney.

“These results are good but we can do even better and we will continue to build on the improvements to public transport to deliver commuters the service they deserve.”



On Time Running By Line

Metropolitan

	2006 – 07	2007 – 08	2008 - 09
Line	Daily %	Daily %	Daily %
Eastern Suburbs	96.2	95.9	97.7
Illawarra	96.1	95.0	96.9
Airport	92.8	94.7	96.9
Bankstown	94.6	96.1	97.6
East Hills	91.5	93.9	96.3
Inner West	93.0	93.1	95.1
South	90.2	92.2	94.9
North	85.5	85.7	91.5
North Shore	94.4	94.5	97.0
Western	86.2	88.4	92.0
South Coast	92.9	92.7	95.0
Newcastle/Central Coast	90.0	89.9	92.9
Blue Mountains	91.5	90.4	93.7
TOTAL	92.2	92.7	95.4